

GUY BRITTON

MIX ENGINEER & PRODUCER

WWW.GUYBRITTON.COM

ULTIMATE VOCAL CHAINS - WAVES EDITION

Thanks for purchasing the **Ultimate Vocal Chains - Waves Edition** pack. Below is all the information you need to run the chains.



Before beginning, please make sure you have all the required Waves plugins. These vocal chains use the following:

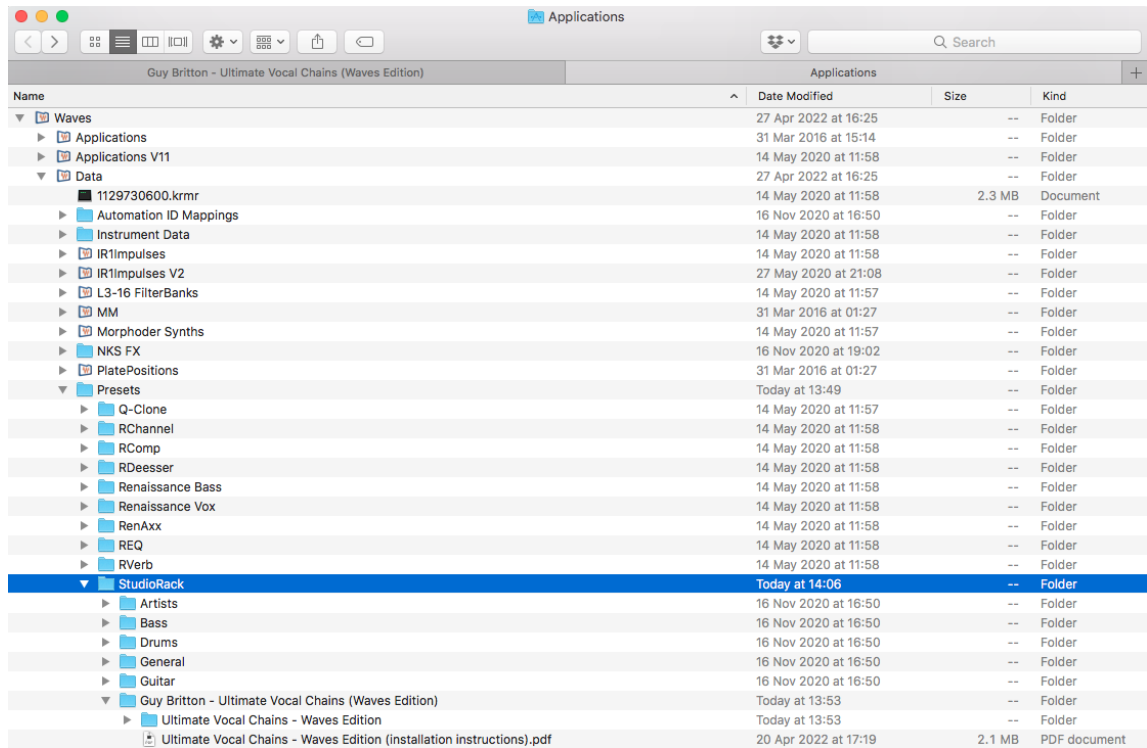
- [StudioRack](#)
- [Platinum Bundle](#)
- [CLA-76](#)
- [Kramer Master Tape](#)

If you have any questions about compatibility, contact me via **guy@guybritton.com**

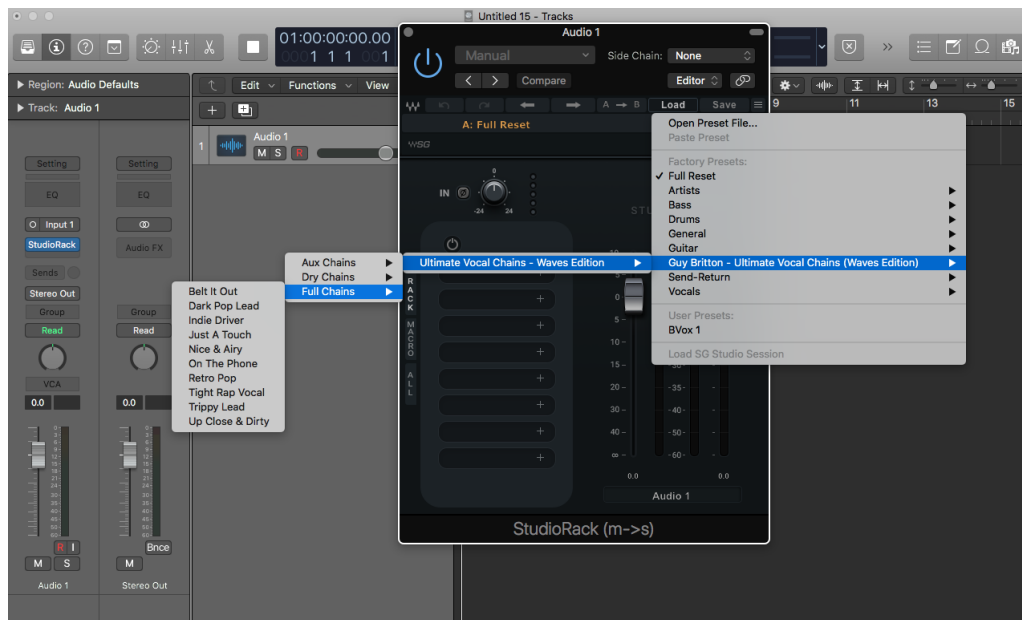
INSTALLING THE CHAINS

To install the chains in StudioRack, complete the following steps:

1. Unzip the downloaded ZIP file and press copy on the **'Ultimate Vocal Chains - Waves Edition'** folder
2. Navigate to your **Applications** (Mac) or **Program Files** (Windows) then go to Waves > Data > Presets > StudioRack and paste the **'Ultimate Vocal Chains - Waves Edition'** folder here:



3. In your DAW, open a stereo instance of *StudioRack*, click 'Load' within the plugin and the Vocal Chains should now appear in the drop-down menu:



DIFFERENT WORKFLOWS

I've designed this pack to be used in two different ways depending on your preferred workflow.

You can utilize the **'full chains'** which feature full vocal processing along with built in delays and reverbs, giving you access to everything you need to quickly achieve a great vocal sound from a single plug-in. The full chains can be inserted directly onto an audio track and give you the entire signal chain. This is ideal for when you want great results instantly, or when you're working with 1 or 2 vocal tracks.

The second way to utilize the pack is to work with the **'dry chains'** in combination with the **'aux chains'**. The dry chains feature the same processing as the full chains except with the delays and reverbs removed from the chains.

This gives you access to all of the EQ, Compression & Parallel processing, but allows you to send the chains to reverbs and delays using your DAW's Aux Sends.

The **'dry chains'** should be inserted directly onto an audio track with a separate send feeding to an aux / bus.

The **'aux chains'** can then be inserted on these auxes (busses), giving you access to 15 custom delay and reverb presets.

This workflow is ideal when you are dealing with a larger mix and want to send several vocal tracks to the same reverb or delay patch. It also saves on processing and keeps your session much more organized.

Each vocal chain features a set of macro controls which have been mapped to key functions, allowing you to easily tweak the processing to suit your mix. You can also open up the full plugins from within *StudioRack* if you want deeper customization. If you want to be even more hands-on, you can also swap out any of the plug-ins for other Waves plug-ins, or add more of your own to the chains!

And that's it! The vocal chains should now be up and running and easy to use. If you have any issues or queries related to this pack, please contact me at guy@guybritton.com and I'll be happy to help you resolve any problems.

GUY BRITTON
[Linktree](#) | [Website](#)
guy@guybritton.com